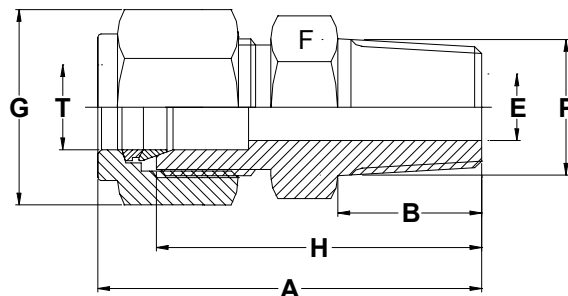


**MALE CONNECTOR (STUD END TAPER THREAD)
METRIC OD TUBES X BSPT THREAD-R**



						PART NO.
		mm	mm	mm	mm	
3	1/8	30.5	12.9	2.4	11	D-MC3-R2
3	1/4	35.6	12.9	2.4	14	D-MC3-R4
6	1/8	32.8	15.3	4.8	14	D-MC6-R2
6	1/4	37.9	16.3	4.8	14	D-MC6-R4
6	3/8	38.4	15.3	4.8	19	D-MC6-R6
6	1/2	44.7	15.3	4.8	20	D-MC6-R8
8	1/8	34.2	16.2	4.8	14	D-MC8-R2
8	1/4	38.7	16.2	6.3	14	D-MC8-R4
8	3/8	39.3	16.2	6.3	19	D-MC8-R6
8	1/2	45.6	16.2	6.3	22	D-MC8-R8
10	1/8	36.3	17.2	4.8	17	D-MC10-R2
10	1/4	40.9	17.2	7.9	19	D-MC10-R4
10	3/8	40.9	17.2	7.9	19	D-MC10-R6
10	1/2	46.5	17.2	7.9	22	D-MC10-R8
12	1/4	43.4	22.8	7.1	22	D-MC12-R4
12	3/8	43.4	22.8	9.5	22	D-MC12-R6
12	1/2	49	22.8	9.5	22	D-MC12-R8
12	3/4	50.5	22.8	9.5	27	D-MC12-R12
12	1	57.1	22.8	9.5	35	D-MC12-R16
14	3/8	44.1	24.4	9.5	24	D-MC14-R6
14	1/2	49	24.4	11.1	24	D-MC14-R8
16	3/8	44.1	24.4	9.5	24	D-MC16-R6
16	1/2	49	24.4	11.9	24	D-MC16-R8
16	3/4	50.5	24.4	12.7	27	D-MC16-N12
18	1/2	50.5	24.4	11.9	27	D-MC18-N8
18	3/4	50.5	24.4	15.1	27	D-MC18-R12
20	1/2	52.3	26	15.9	30	D-MC20-R8
20	3/4	57.1	26	18.3	35	D-MC20-R12
25	1/2	57.5	31.3	11.9	35	D-MC25-R8
25	3/4	57.5	31.3	15.8	35	D-MC25-R12
25	1	62.3	31.3	21.8	35	D-MC25-R16

S.D.INDUSTRIES.

An ISO 9001 : 2000 Company

Hydraulics, Pneumatics, Instrumentation Fittings, Manifolds & Valves

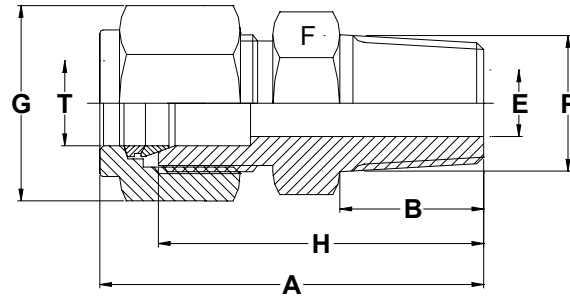
2/10, Singh Industrial Estate, Ram Mandir Road, Goregaon (W), Mumbai-400 104, India

◆ Phone: +91 22 28791745 / 55 / 56 ◆ Fax: +91 22 28752130

◆ Email: sdind@vsnl.com ◆ www.sdindustries.com

"We Deliver Confidence Through Quality Products."

**MALE CONNECTOR (STUD END TAPER THREAD)
INCH OD TUBES X BSPT THREAD-R**



TUBE OD - T	P	A	E	F	G	H	PART NO.
	BSPT (M)	mm	mm	mm	mm	mm	
1/8	1/8	30.5	2.4	11	11	23.9	2D-MCR
1/8	1/4	35.6	2.4	14	11	29.0	2-4D-MCR
1/4	1/8	32.8	4.8	14	14	25.4	4-2D-MCR
1/4	1/4	37.8	4.8	14	14	30.5	4D-MCR
1/4	3/8	38.4	4.8	19	14	31.0	4-6D-MCR
1/4	1/2	44.7	4.8	22	14	37.4	4-8D-MCR
5/16	1/4	38.6	6.3	14	16	31.2	5-4D-MCR
3/8	1/8	35.3	4.8	16	17	27.9	6-2D-MCR
3/8	1/4	39.8	7.1	16	17	32.5	6-4D-MCR
3/8	3/8	39.8	7.1	19	17	32.5	6D-MCR
3/8	1/2	46.8	7.1	22	17	38.9	6-8D-MCR
1/2	1/4	43.4	7.1	22	22	33.3	8-4D-MCR
1/2	3/8	43.4	9.6	22	22	33.3	8-6D-MCR
1/2	1/2	49	10.4	22	22	38.9	8D-MCR
1/2	3/4	50.5	10.4	27	22	40.4	8-12D-MCR
1/2	1	57.1	10.4	35	22	47.0	8-16D-MCR
5/8	3/8	44.2	9.6	24	25	34.0	10-6D-MCR
5/8	1/2	49	10.4	24	25	38.9	10-8D-MCR
3/4	1/2	50.5	10.4	27	28.5	40.4	12-8D-MCR
3/4	3/4	50.5	15.8	27	28.5	40.4	12D-MCR
3/4	1	57.1	15.8	35	28.5	47.0	12-16D-MCR
7/8	3/4	50.5	15.8	30	32	40.4	14-12D-MCR
1	1/2	57.4	10.4	35	38	45.2	16-8D-MCR
1	3/4	57.4	15.8	35	38	45.2	16-12D-MCR
1	1	62.2	22.3	35	38	50.0	16D-MCR

S.D.INDUSTRIES.

An ISO 9001 : 2000 Company

Hydraulics, Pneumatics, Instrumentation Fittings, Manifolds & Valves

2/10, Singh Industrial Estate, Ram Mandir Road, Goregaon (W), Mumbai-400 104, India

◆ Phone: +91 22 28791745 / 55 / 56 ◆ Fax: +91 22 28752130

◆ Email: sdind@vsnl.com ◆ www.sdindustries.com

"We Deliver Confidence Through Quality Products."